



"S.J Superman" _Arduino Uno/Laser CNC

20"x31"x9"

Fall 2011

welcome

OLDER POSTS

posted on Oct 25, 2011



{ Closing Reception : Oct 28, 2011 / Friday / 12:30 pm }

Lee, Wonjae
University of Iowa
2012 Sculpture M.F.A Candidate



thank you



KATUSA
100% LASER CUT
MADE IN CANADA
SINCE 1988

HQ PLT



SAFETY VEST
CLASS 2
EN 471
CONFORMS TO
EN 471 CLASS 2
EN 471 CLASS 2
EN 471 CLASS 2

CS13

"Katusa" _Laser CNC

23"x36"x4"

Fall 2011

33,000 VOCABULARY

posted on Aug 27, 1999

풍부한 어휘력 향상을 위한

Vocabulary
33,000 포켓북

Samuel C. Brownstein · Mitchel Weiner 편역

기본이 잡혀있는 언어에 토양이 적어 어휘력을 향상시키기란
이러한 일인자로 노력을 통하여 먼저, 어디까지 할지라도 전두엽과
연락해서 이루어지는 모든 언어의 학습(정보)을 정확히 처리해 주고 언어의
력을 갖게 함으로써 정확한 어휘의 사용과 이해를 이루어야 하였다.

한글
거북선



"Just Letting You" _Laser CNC

7"x35"x4"

Fall 2011



"Innocent" _Laser CNC/Brown Paper/Packaging Tape

46"x24"x15"

Fall 2011



PHILIPPIANS 4:6-7

posted on Aug 20, 2010



Philippians 4:6-7

6. Do not be anxious about anything, but in everything, by PRAYER and PETITION with thanksgiving, present your requests to God.

7. And the peace of God, which transcends all understanding, will GUARD YOUR HEART AND YOUR MIND in Christ Jesus.

University of Iowa
© 2010 University of Iowa
www.press.uoi.edu







"Fore" Laser CNC

6"x23"x4"

Fall 2011



"T.I.G" _Laser CNC

6"x9"x5"

Fall 2011

LITE AS FEATHER

printed on April 22, 2011



Supporting the world's most innovative
and creative people is our mission. We
are a company that is committed to
helping you succeed.

"Kudos to you!"

That's the spirit of our business. We
are here to help you.

© 2011 [Company Name]



"My Mirror" _Laser CNC

38"x18"x2"

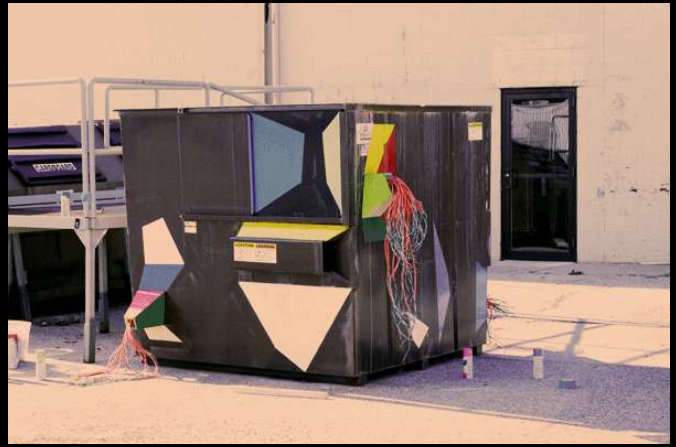
Fall 2011





"Nude Bike" _Fillet Brazing/Tig Welding

Spring 2011



"Untitled" _Extension Cords

Spring 2011



6 yr old asian girl



male asian adult



Noma_2007

3/4" plywood / wood glue / grinder / sander

Thicker and harder plywoods were layered for Noma. Overall it is slimmer than Abu since Noma is a grown up version of Abu. People can sit on the back or lean against the head and in that manner two people can share Noma. The head functions for the arm rest or the back support as illustrated above. Two people can share the chair. It is nice to see the actual joints between parts; head, back, and legs. In Noma, the pattern, which layered plywood creates, is absolutely eye catching. All the rounded edges were made very carefully for beauty as well as kids' safety.



Abu_2007

3/8" chipboard plywood / wood glue / grinder / sander

As a designer I like to explore the core beauty of materials such as plywood, PVC pipes and so forth. I try to change the aspect of plain rough plywood to the piece of functional design. The beauty of the plywood is the layers which usually can not be seen or often times can be ignored. I designed two chairs and stools. They provide multiple sitting positions. Dog, human's best friend, was the inspiration. Especially on Abu piece, the texture of the chipboard is gorgeous. The more you grind to the core, the more detailed texture you can get. As you grind the whole form, seams start to disappear as if the stools are made out of a large piece of wood. No wood stain was applied to keep the original taste of the texture.

Dissolved_2007

3/4" 4'x8' plywood

Piece of plywood was cut in pieces to be reassembled together. I wanted to break the original pattern of plywood and rearranged them as if they were assembled from different sheet of plywood. To avoid plain boring cube, a recessed desk, shelving, and seating area were designed. Negative spaces which were created outside made the form much more interesting. Thousands of holes were added as if the box disappears into the air. Much more holes would be added as if the box is invisible in a distance. "Dissolved". Dissolved could be placed in the middle of the forest where there are lots of vines which could weave through the holes and become part of the nature as if it is the gift to the earth. Also they can be built into the city for phone booth, bus station with little modification to invite nature to grey cities.



Jungjung, 2006

1,8' polystyrene / 4"x8" pine wood plank

Jungjung means the steam-pipes in Pop. of Korea. This project is part of the M.A. thesis work. (Items cut was placed for eyes examine and package. Shells of polystyrene were cut into stripes. Groups of Jungjung were inspired by my drawing strokes and colors of charcoal. By expanding to the outside of the board, the air entered the pipe and the piece itself becomes one.

